

Brighter Projection! Tougher Picture!

All New PureShift Giving You More Flexible & Versatile Installation

Finding the installation of projectors difficult? The all new Optoma **EX765** & **EW766** 4000-lumen series come with the revolutionary PureShift function and the amazing 1.5x & 1.6x super wide zoom range help you overcome the challenges of setting up projectors in whatever venues.

We see what you really need, and we deliver.



PureShift - EASY INSTALLATION

The PureShift lens system enables the vertical and horizontal position of the projected image to be adjusted without moving the position of the projector. Through the innovative Non-Telecentric lens system, the contrast ratio, uniformity and brightness of the shifted image is better than what the traditional systems can achieve.



Maintenance FREE = Lower Total Cost of Ownership (TCO)

DLP® technology ensures lower cost of ownership, longer life and improved reliability compared to other technologies.



Environmentally Friendly

The environmentally friendly feature includes <1W standby mode and auto power off saving you both time and money



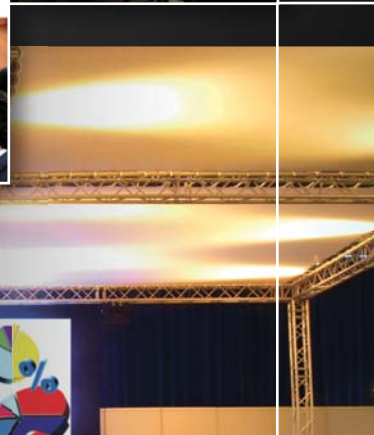
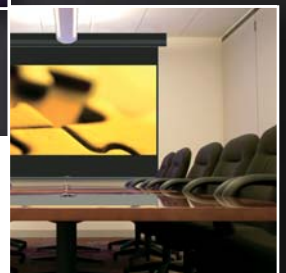
Wireless Capability (EX765W & EW766W)

Built-in wireless solution for IEEE802.11 b/g wireless connection, taking away the cable connection hassle.



Unmatched Product Quality / Reliability

- 5-year color guarantee
- 5-year imager guarantee
- Hassle free / filter free / minimum maintenance required
- Lowest cost of ownership



| Specification | EX765/EX765W | EW766/EW766W |
|---------------|--------------|--------------|
|---------------|--------------|--------------|

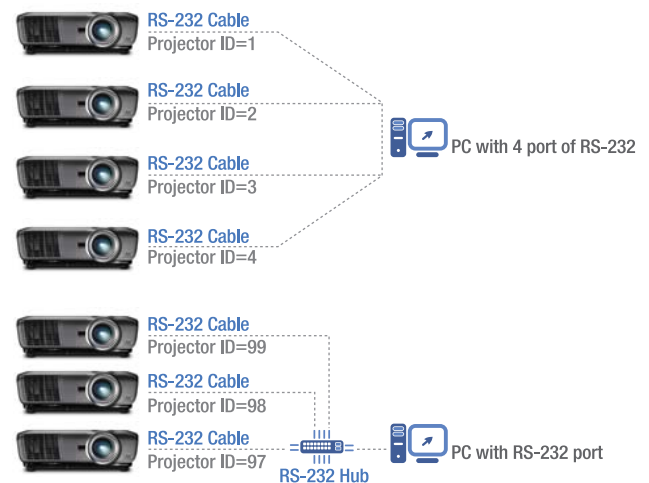
| | | |
|------------------------------|---|--|
| Display Technology | TI DLP® 0.55" XGA DMD Chip | TI DLP® 0.65" WXGA DMD Chip |
| Resolution | Native: XGA(1024x768) Max: UXGA(1600x1200) 60Hz | Native: WXGA 1280 x 800 Max: UXGA(1600x1200) 60Hz |
| Brightness (typical) | 4000 ANSI Lumens | |
| Contrast Ratio | 2500 : 1 | |
| Displayable Colors | 134.2 Million colors | |
| Projection Lens | F/2.41 ~ 3.2; f=18.39 ~ 29.42mm 1.6x Manual Zoom | F/2.45 ~ 2.9; f=22.18 ~ 33.27mm 1.5x Manual Zoom |
| Projection Image Size | 1.5 ~ 11m (28"~334.2") Diagonal 4:3 | 1.5 ~ 11m (29.1"~325.3") Diagonal 16:10 |
| Projection Distance | 1.5 ~ 11m | |
| Throw Ratio | 1.62~ 2.64:1 (Projection Distance/Image Width) | 1.57~ 2.39:1 (Projection Distance/Image Width) |
| Keystone Correction | ±30° (vertical) | |
| Aspect Ratio | 4:3 Native, 16:9 Compatible | 16:10 Native, 16:9 and 4:3 compatible |
| Scan Rate | Horizontal: 15 ~ 91kHz Vertical: 50 ~ 85Hz | |
| PC Compatibility | UXGA, SXGA+, SXGA, XGA, SVGA, VGA Compression, VESA standards PC & Macintosh compatibl | |
| Video Compatibility | HDTV (720p, 1080i/p), SDTV (480i/p, 576i/p), Full NTSC, PAL PAL-M, PAL-N, SECAM | |
| Input Connections | <ul style="list-style-type: none"> ■ HDMI(HDCP): Audio supported ■ DVI-D(HDCP): HDMI via adaptor ■ 15 Pin D-Sub VGA x2 -SCART via adaptor -Component via adaptor ■ S-Video 4 Pin Mini Din ■ Composite RCA Jack ■ Audio In(RCA/Jack) x3 ■ USB(remote control) | |
| Output Connections | <ul style="list-style-type: none"> ■ PC 15 Pin D-Sub VGA(monitor loop-through) ■ Audio Mini Jack ■ +12v Trigger | |
| Control Functions | <ul style="list-style-type: none"> ■ RS232 9 Pin ■ RJ45-Network Control | |
| Uniformity | 85 % | |
| Lamp Type | 280-watt replaceable lamp | |
| Estimated Lamp Life | 3000/2000 hours (STD/BRIGHT mode) | |
| Speaker | 2W speaker x 2 | |
| Power Supply | 100 ~ 240V, 50 ~ 60Hz | |
| Weight | 5.5 kg / 12.1 lbs (with module) 5.3 kg / 11.7 lbs (without module) | |
| Operational Noise | 30/32dB (STD/BRIGHT mode) | |
| Dimensions (WxDxH) | 364 x 283 x 127mm | |

Projection Distance / Image Size

| Projection Distance (meter) | Image size range (Inch) | |
|-----------------------------|-------------------------|---------------|
| | EX765 | EW766 |
| 1.5 | 28.0 ~ 45.6 | 29.1 ~ 44.4 |
| 2.0 | 37.3 ~ 60.8 | 59.1 ~ 38.9 |
| 3.0 | 55.9 ~ 91.1 | 58.3 ~ 88.7 |
| 4.0 | 74.6 ~ 121.5 | 77.7 ~ 118.3 |
| 5.0 | 93.2 ~ 151.9 | 97.1 ~ 147.9 |
| 8.0 | 149.1 ~ 243.0 | 155.4 ~ 236.6 |
| 10.0 | 186.4 ~ 303.8 | 194.3 ~ 295.7 |
| 11.0 | 205.1 ~ 334.2 | 213.7 ~ 325.3 |

Remote Management

Control plural EX765/EW766 by wire via RS-232 hub or directly with projector ID in EX765/EW766



5-Year Color Guarantee & 5-Year Imager Guarantee

We are so confident that the EX765 & EW766 colors will not fade that we guarantee the colors will remain vibrant and vivid, even after many years of use.

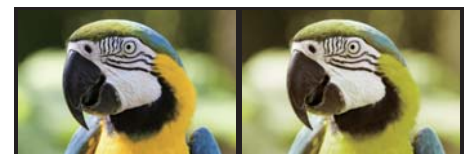


The large screen experience demands sharp, flawless images with instant impact and lasting crystal clear pictures. To retain image clarity, Optoma projectors are designed with DLP® technology, preventing degradation over time and consistent pixel performance. The Imager Guarantee ensures a precise picture performance for a minimum of five years.



True Vivid™ Technology

Optoma proprietary TrueVivid™ color enhancement technology affords better balanced chrominance and luminance for life-like colors, giving the viewer the ultimate visual experience.



with TrueVivid™

without TrueVivid™

BrilliantColor™ -II

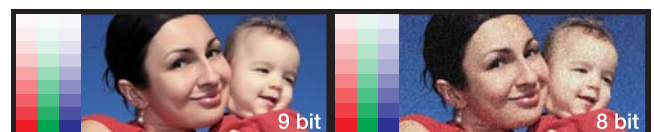


BrilliantColor™ is a Texas Instruments technology, which uses innovations in image processing to improve the optical efficiency of DLP® projection systems. BrilliantColor™ allows the usage of a more advanced image processing algorithm and enables the usage of more colors on the color wheel, than the standard Red, Green, Blue and White segments. New BrilliantColor™-II technology enables higher brightness levels by boosting mid-tone colors, resulting in more vibrant, precisely accurate colours projected on the screen.

Available from:

9 bit Color Processing

The new 9 bit color processing technology increases the number of colors that can be displayed from 16 millions to over 134 millions.



natural, rich looking colors

un-natural looking images

www.optoma.com

All Specifications are subject to change without notice.
© 2009, Optoma Corporation. DLP® and the DLP® medallion are trademarks of Texas Instruments.
All other names mentioned herein are property of their respective owners.